



**21 Argyll Street, Castlefields, Shrewsbury, SY1 2SF**

2 bedroom end terrace house — £220,000 Freehold



## 21 Argyll Street, Castlefields, Shrewsbury, SY1 2SF

£220,000 Freehold — 2 bedroom end terrace house

[sales@cgpooks.co.uk](mailto:sales@cgpooks.co.uk)

**This very well-presented and extended end of terrace house has been recently improved to provide thoughtfully designed and versatile accommodation, while retaining plenty of character and benefitting from a private rear garden.**

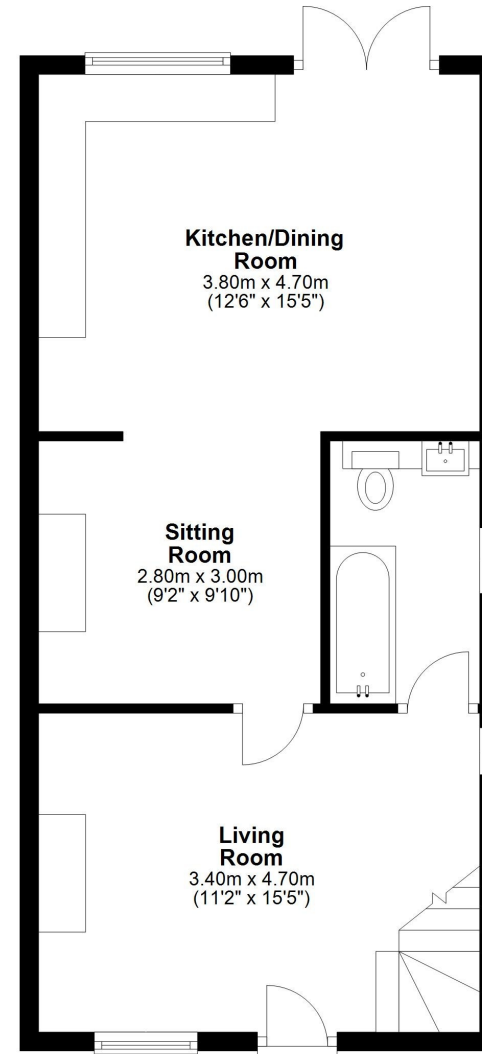
### KEY FEATURES

- Good sized living room with windows to two elevations and turning staircase to landing
- Impressive open plan kitchen/dining room with a range of well-fitted units and glazed doors onto the garden
- Additional sitting room/snug, which is also open plan to the kitchen, creating a versatile space that would also make a great study or play room
- Re-fitted ground floor bathroom with shower, decoratively tiled throughout
- On the first floor is a master bedroom with plenty of built-in storage, a further generous bedroom (also having built-in wardrobes) and a useful study or nursery
- Double glazed windows and gas fired central heating via a modern combi-boiler
- Private rear garden, gravelled for easy maintenance, with planted borders and gated access to side
- A fantastic location on a quiet street within a popular residential area, a short walk from the local shop and no more than a 10-minute walk to the train station and town centre
- This property has been recently modernised and previously run as a successful holiday let
- Sold vacant with no upward chain

[Coopergreenpooks.co.uk](http://Coopergreenpooks.co.uk)

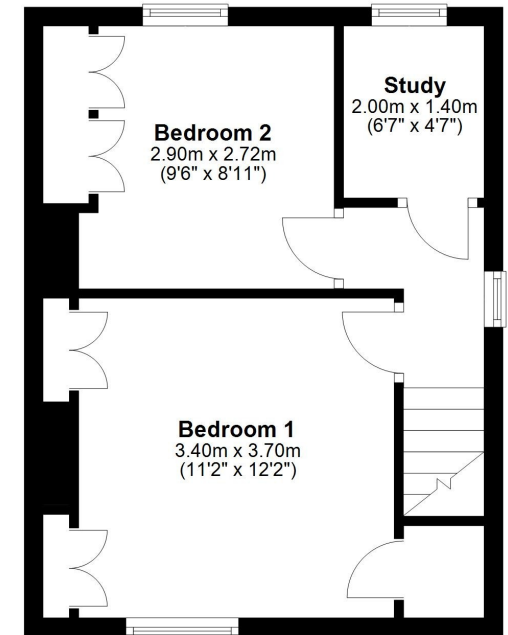
### Ground Floor

Approx. 47.9 sq. metres (515.8 sq. feet)



### First Floor

Approx. 29.8 sq. metres (320.4 sq. feet)



Total area: approx. 77.7 sq. metres (836.2 sq. feet)















## 21 Argyll Street, Castlefields, Shrewsbury, SY1 2SF

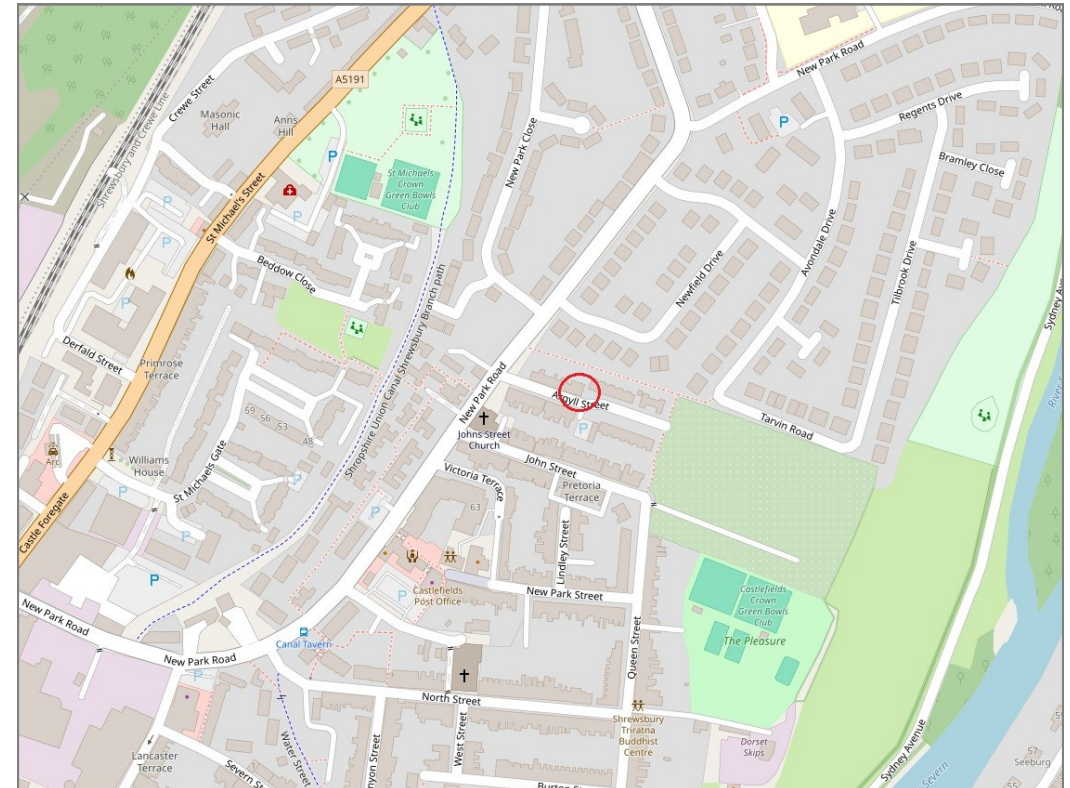
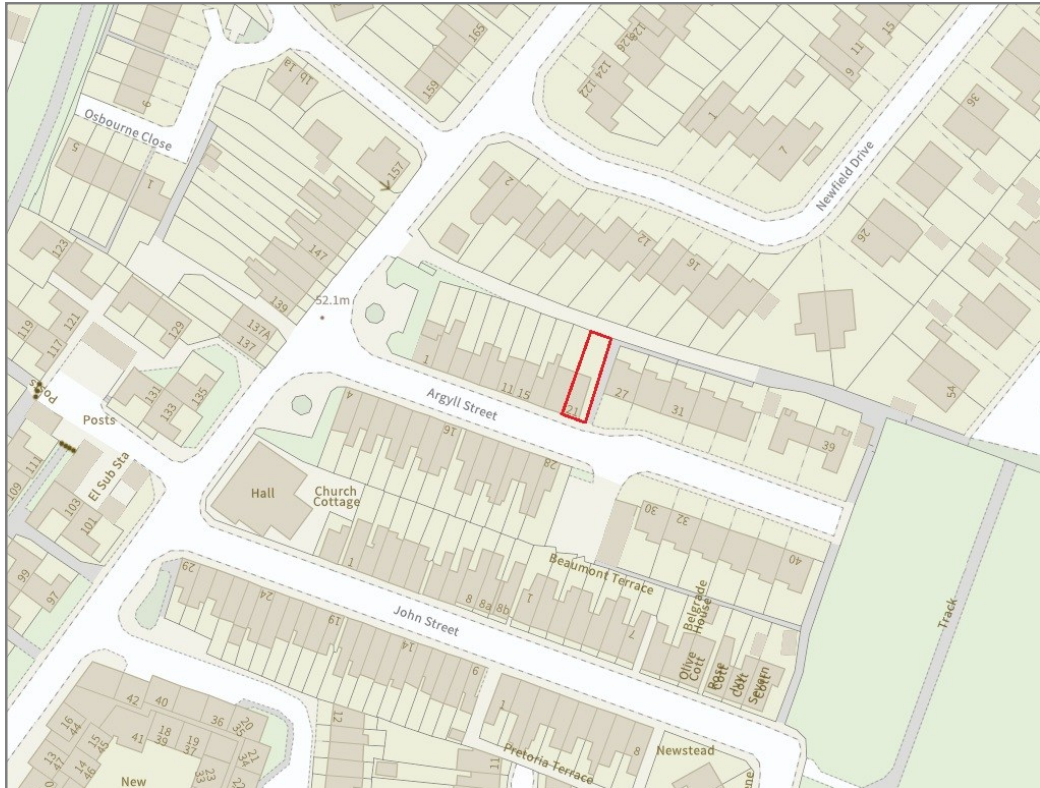
£220,000 Freehold — 2 bedroom end terrace house

sales@cgpooks.co.uk

rightmove

onTheMarket.com

RICS  
Regulated by RICS



**BOUNDARIES NOT CONFIRMED**

Tenure	<b>Freehold</b>
Local Authority	<b>Shropshire Council</b>
Council Tax	<b>Band B</b>
EPC Band	<b>Band D</b>
Services	<b>All mains services are connected</b>

**Expert mortgage advice available**

3 Barker St, Shrewsbury SY1 1QF

**Cooper Green Pooks**  
**01743 276666**



Your home may be repossessed if you do not keep up repayments on your mortgage.

There may be a fee for mortgage advice. The actual amount you pay will depend upon your circumstances. The fee is up to 1% but a typical fee is 0.3% of the amount borrowed.

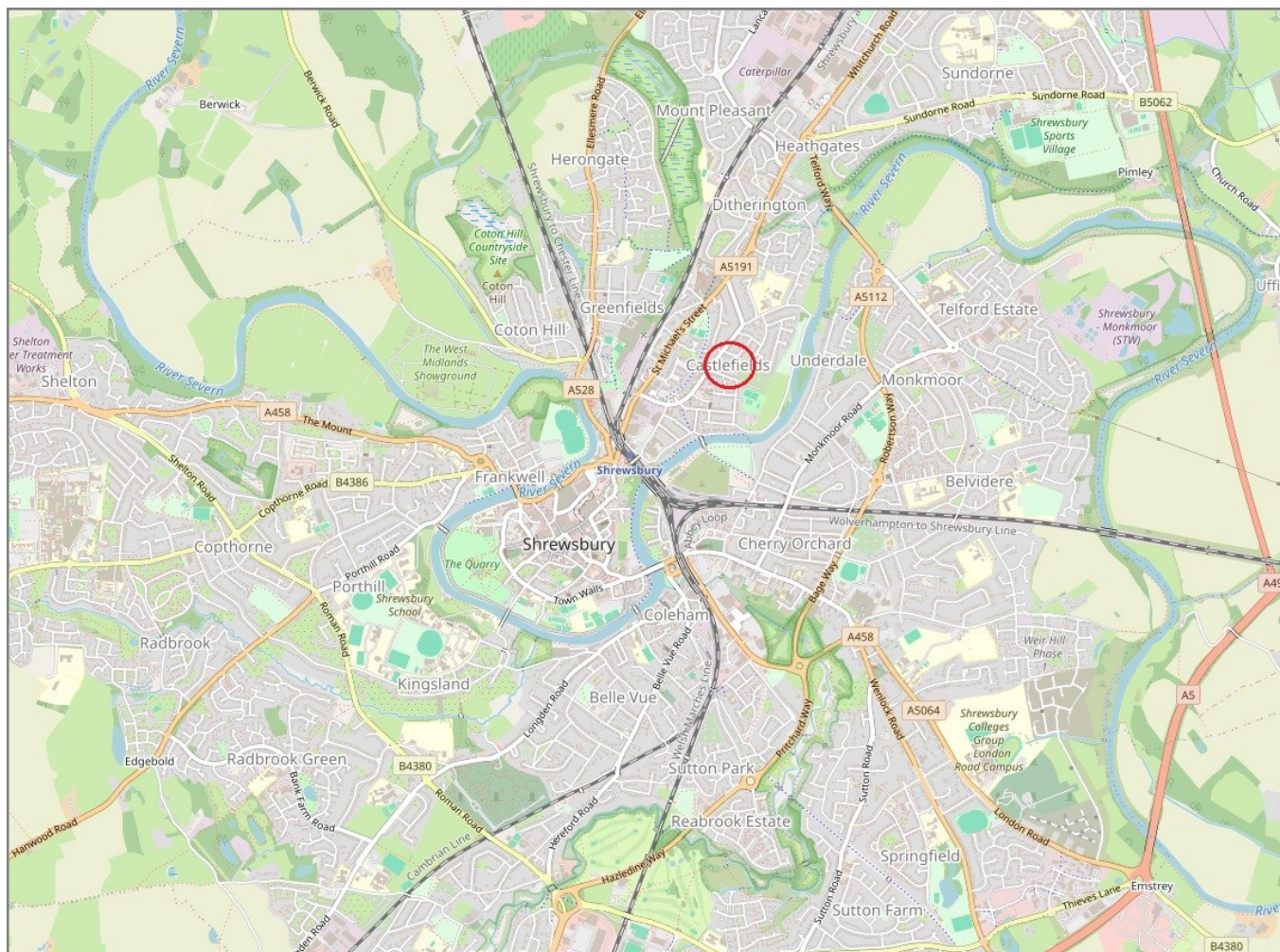


## 21 Argyll Street, Castlefields, Shrewsbury, SY1 2SF

Coopergreenpooks.co.uk

£220,000 Freehold — 2 bedroom end terrace house

sales@cgpooks.co.uk



**IMPORTANT NOTICE:** Cooper Green Pooks for themselves and for the lessors or vendors of this property whose agents they are give notice that: 1 No appliances, services or service installations have been tested and no warranty as to suitability or serviceability is implied. Any prospective purchaser or lessee is advised to obtain verification from their surveyor or solicitor. 2. The particulars are set out as a general outline only for the guidance of the intended purchasers or lessees and do not constitute, nor constitute part of, an offer or contract. 3. All descriptions, reference to condition and necessary permissions for use and occupation and other details are given in good faith and are believed to be correct but any intending purchasers or lessees should not rely on them as statements or representation of fact but satisfy themselves by inspection or otherwise as to the correctness of each of them. 4. No person in the employment of Cooper Green Pooks has any authority to make or give any representation or warranty whatsoever in relation to this property. 5. All rentals and prices are quoted exclusive of Stamp Duty, legal and surveyors fees and any other associated purchasers or lessees costs. 6. Floor plans are indicative only and should not be relied on. 7. The plan showing the boundary of the property is indicative only and has not been checked against the legal title so should not be relied on. 8. All dimensions, floor areas and site areas are only approximate and should not be relied on. Dimensions are generally maximum room dimension.